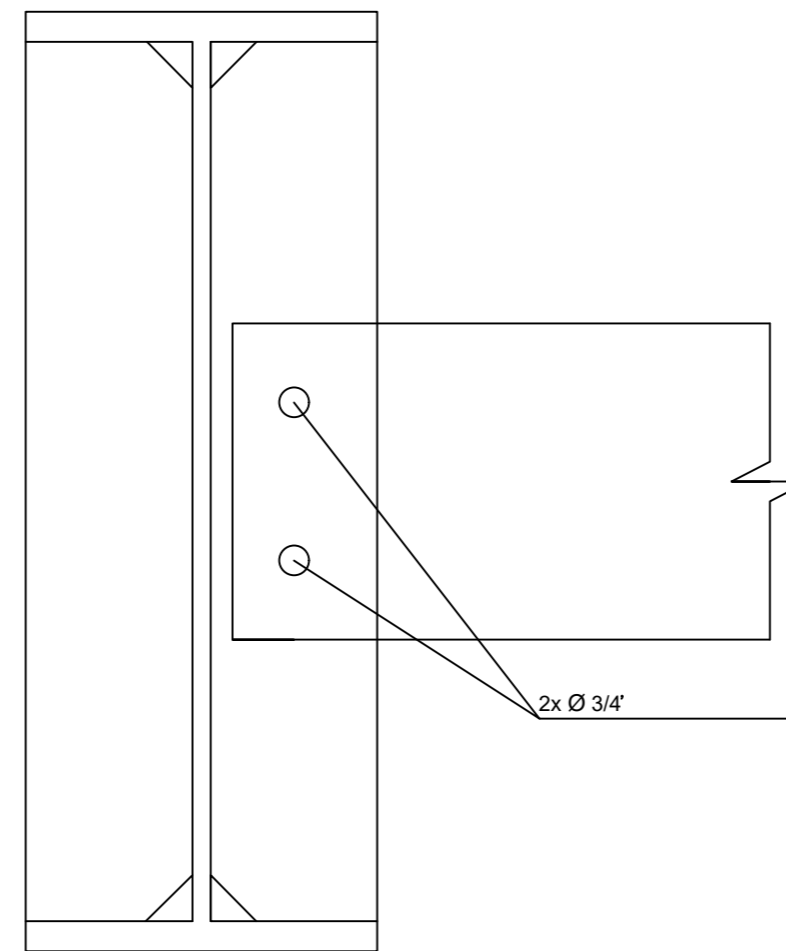
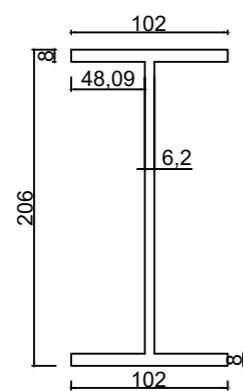


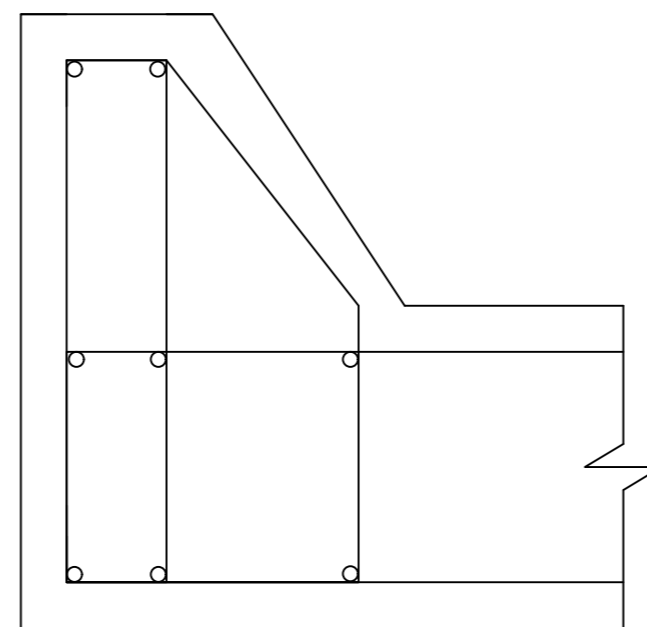
PERFIL W610X125  
(mm)



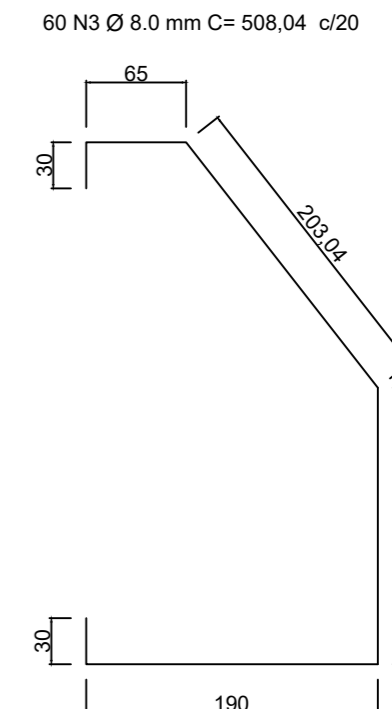
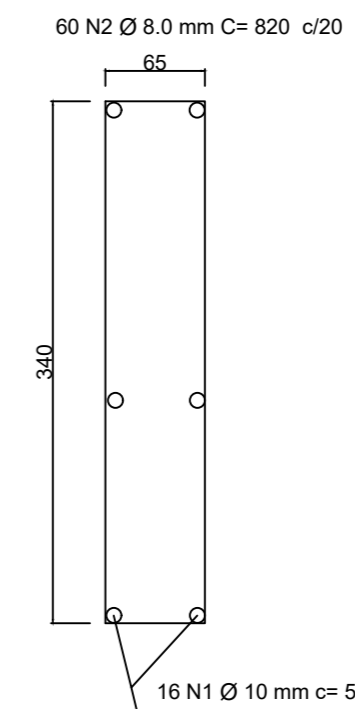
DETALHE LIGAÇÕES



PERFIL W250X22,3  
(mm)



DETALHE GUARDA RODA



DETALHE GUARDA RODA  
- ARMAÇÃO (mm)

PREFEITURA MUNICIPAL DE CHAPADA DOS GUIMARÃES	
SECRETARIA MUNICIPAL DE INFRAESTRUTURA	
OBRA: PONTE CÓRREGO CEDRAL	
LOCAL: ESTRADA VICINAL PINGADOR	DETALHE PERFIL/GUARDA RODA
COORDENADA: 15° 5'34.24"S 55°45'47.72"W	DATA: MAIO/2021
FOLHA: 02/04	ESCALA: S/E